

**Návod k montáži /  
Mounting instructions**



Snímače tlaku / Pressure Transmitter  
Vestavné sondy / Screw-in Transmitter  
OEM snímače tlaku / OEM Pressure Transmitter

DMK 331, DMK 331 P, DMK 351, DMK 351 P, DMP 311,  
DMP 320, DMP 321, DMP 331, DMP 331i, DMP 331 P,  
DMP 331 Pi, DMP 333, DMP 333i, DMP 334, DMP 334i,  
DMP 335, DMP 335P, DMP 339, DMP 341, DMP 343,  
LMK 331, LMK 351, LMP 331, LMP 331i,  
17.6XX, 17.6XX G, 18.6XX, 18.6XX G,  
26.6XX, 26.6XX G, 30.6XX, 30.6XX G



www.bdsensors.com

**Eastern Europe**  
BD SENSORS s.r.o.  
Hradištská 817  
CZ - 687 08 Buchovice  
Czech Republic  
Tel.: +42 (0) 572-4110 11  
Fax: +42 (0) 572-4114 97

**Western Europe**  
BD SENSORS GmbH  
BD-Sensors-Str. 1  
D - 95199 Thierstein  
Germany  
Tel.: +49 (0) 9235-9811-0  
Fax: +49 (0) 9235-9811-11

**Russia**  
BD SENSORS RUS  
39a, Varshavskoe shosse  
RU - Moscow 117105  
Russia  
Tel.: +7 (0) 95-380 1683  
Fax: +7 (0) 95-380 1681

**China**  
BD SENSORS China Co, Ltd.  
Room B, 2nd Floor, Building 10,  
No. 1188 Lianhang Rd.  
201112 Shanghai, China  
Tel.: +86 (0) 21-51600 190  
Fax: +86 (0) 21-33600 610

Tento návod k montáži je výtah z podrobného návodu k obsluze. Ten si prosím stáhněte z našich internetových stránek, pokud nejste s výrobkem dobře seznámeni.



These mounting instructions are an excerpt from the complete operating manual. It may be downloaded from our homepage, if you are not familiar with the device.

www.bdsensors.cz  
www.bdsensors.com

– Technické změny vyhrazeny –  
– Technical modifications reserved –

**WARNING!** In order to avoid hazards to operators and damages to the device, the following instructions have to be performed by qualified technical personnel.

**WARNING!** Adhere to the safety and operating instructions stated in the operation manual. Effective regulations on occupational safety, accident prevention as well as national installation standards and approved engineering techniques must in addition be complied with.

**Limitation of liability**

If the instructions in the operating manual are not adhered to or if the device is inappropriately used, modified or damaged, liability is not assumed and warranty claims will be excluded.

**Intended use**

Ensure that the medium is compatible with the media-wetted parts and that the device is suitable for the application without restrictions. The technical data listed in the current data sheet is binding and must definitely be observed.

**Product identification**

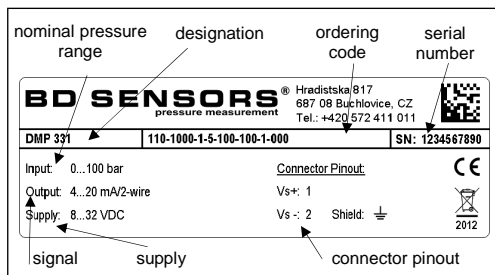


Fig. 1 Manufacturing label (for DMP 331)

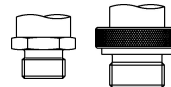
**Pin-configuration**

Electrical connections	ISO 4400	Binder 723 (5-pin)	Binder 723 (7-pin)	M12x1 / metal (4-pin)	field-housing	cable-colours (DIN47100)	Buccaneer (4-pin)	TRIM TRIO® (4-pin)
supply +	1	3	3	1	IN +	wh (white)	1	1
supply -	2	4	1	2	IN -	bn (brown)	2	2
signal + (only for 3-wire)	3	1	6	3	OUT +	gn (green)	3	3
shield	ground pin	5	2	4	⚡	ye/gn (yellow / green)	4	4
communication-interface	RxD	-	4	-	-	-	-	-
	TxD	-	5	-	-	-	-	-
	GND	-	7	-	-	-	-	-
digital signal RS485	supply +	-	3	1	-	wh (white)	-	-
	GND	-	4	3	-	bn (brown)	-	-
	pin A	-	1	2	-	ye (yellow)	-	-
	pin B	-	2	4	-	pk (pink)	-	-
shield	-	5	-	pressure port	-	ye/gn (yellow / green)	-	-
Electrical connections	Bayonet MIL-C-26482 (10-6)							
		2-wire	3-wire					
supply +	A	A						
supply -	B	D						
signal + (only for 3-wire)	-	B						
shield	pressure port							

**Mounting**

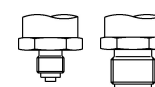
- WARNING!** Install the device only in depressurized and currentless state!
- WARNING!** Use a suitable seal, corresponding to the medium and the pressure input.

**Connection acc. to DIN 3852**



- knurled ring: tighten by hand only
- wrench size of plastic: max. 3 Nm
- G1/4" steel: approx. 5 Nm
- G1/2" steel: approx. 10 Nm
- G3/4" steel: approx. 15 Nm
- G1" steel: approx. 20 Nm
- G1 1/2" steel: approx. 25 Nm

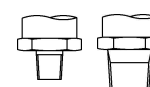
**Connection acc. to EN 837**



- G1/4": approx. 20 Nm
- G1/2": approx. 50 Nm

**Note: permitted pressure ranges and materials according to EN 837.**

**NPT connections**



- 1/4" NPT: approx. 30 Nm
- 1/2" NPT: approx. 70 Nm

**1/4" flare**



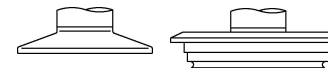
max. 10 Nm

**Dairy pipe connection**



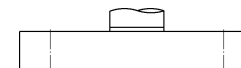
- Centre the connection in the mounting part.
- Screw the cup nut onto the mounting part.
- Then tighten it with a hook wrench.

**Clamp and Varivent® connection**



- Centre the connection in the mounting part.
- Fix the device with a suitable fastening element (e.g. semi-ring or retractable ring clamp) according to the supplier's instructions.

**Flange connection**



Fasten the flange with 4 resp. 8 screws (depending on flange version) on the counter flange.

**Internal threads M20x1.5 and 9/16" UNF (for DMP 334 / DMP 334i)**

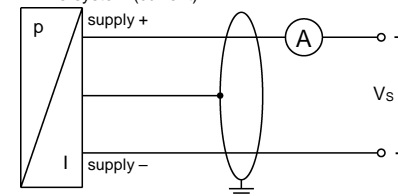
Screw your high pressure connection into the internal thread of the DMP 334 / DMP 334i according to the manufacturer's description and tighten it properly.



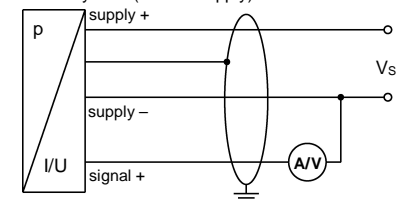
**DANGER!** The high pressure tube seals metal-to-metal in the chamfer of the pressure port. No further seal is permitted on this high pressure connection. A wrong installation can cause enormous danger!

**Wiring diagrams**

**2-wire-system (current)**



**3-wire-system (current/supply)**



For the electrical connection, a shielded and twisted multicore cable is recommended.